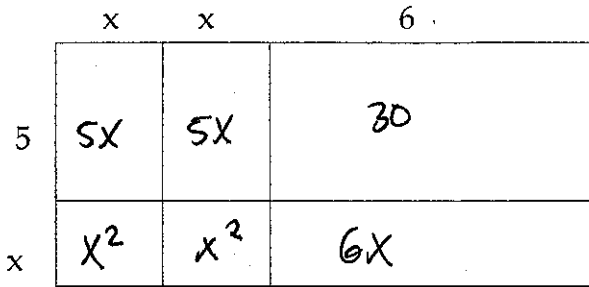


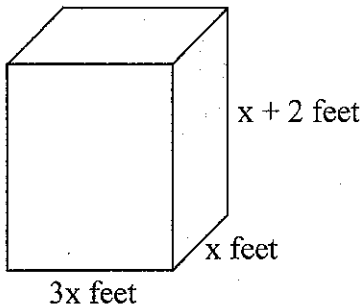
5. What is the product of the expression represented by the model below?



$$2x^2 + 16x + 30$$

- A. $3x + 11$
- B. $x^3 + 30$
- C. $2x^2 + 10x + 36$
- D. $2x^2 + 16x + 30$

6. This diagram shows the dimensions of a cardboard box.



Which expression represents the volume, in cubic feet, of the box?

- A. $3x^3 + 2$ cubic feet
- B. $5x^3 + 2$ cubic feet
- C. $3x^3 + 6x^2$ cubic feet
- D. $5x^3 + 6x^2$ cubic feet

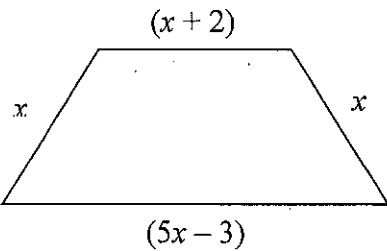
$$V = l \cdot w \cdot h$$

$$V = (x+2)(3x)(x)$$

$$V = 3x^2(x+2)$$

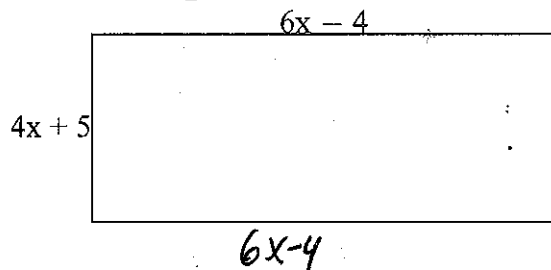
$$V = 3x^3 + 6x^2$$

7. Find the perimeter of the trapezoid.



$$P = 8x - 1$$

8. Find the perimeter and area of the rectangle.



$$P = 20x + 2$$

$$A = (4x+5)(6x-4)$$

$$= 24x^2 - 16x + 30x$$

$$A = 24x^2 + 14x - 20$$

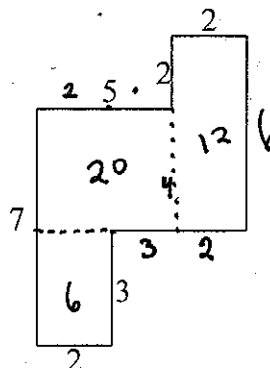
9. Find the perimeter and area of the figure.

$$P = 7 + 2 + 3 + 5 + 6 + 2 + 2 + 5$$

$$P = 32$$

$$A = 6 + 20 + 12$$

$$A = 38$$



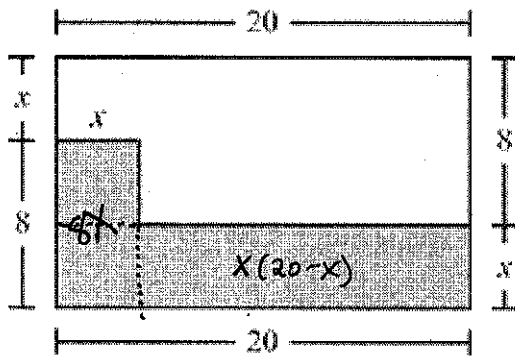
1. Which expression is equivalent to $(2-x)^3$?

- A. $6-x^3$
 B. $8-x^3$
 C. $1-3x-3x^2-x^3$
 D. $8-12x+6x^2-x^3$
- $(2-x)(2-x)(2-x)$
 $4-2x-2x+x^2$
 $(2-x)(x^2-4x+4)$
 $2x^2-8x+8$
 $-x^3+4x^2-4x$
 $-x^3+6x^2-12x+8$

2. A train travels at a rate of $(4x+5)$ miles per hour. How many miles can it travel at that rate in $(x-1)$ hours?

- A. $3x-4$ miles
 B. $5x-4$ miles
 C. $4x^2+x-5$ miles
 D. $4x^2-9x-5$ miles
- $R = \frac{D}{T}$
 $(x-1)(4x+5) = \frac{D}{(x-1)} \cdot (x-1)$
 $D = (x-1)(4x+5)$
 $D = 4x^2 + 5x - 4x - 5$
 $D = 4x^2 + x - 5$

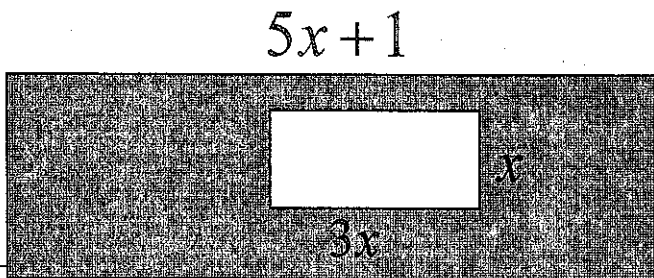
3. This rectangle shows the floor plan of an office.



~~$20x \times 4$~~
 $x(20-x) + 8(x)$
 $20x - x^2 + 8x = -x^2 + 28x$

The shaded part of the plan is an area that is getting new tile. Write an algebraic expression that represents the area of the office that is getting new tile.

4. Find the area of the shaded region.



$(5x+1)(2x-1) - 3x(x)$
 $10x^2 - 5x + 2x - 1 - 3x^2$
 $7x^2 - 3x - 1$

$2x-1$