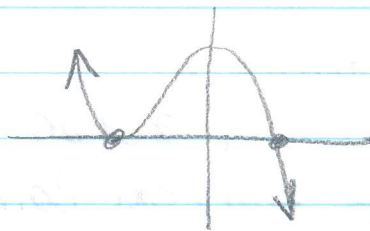


Analyzing Graphs W 2

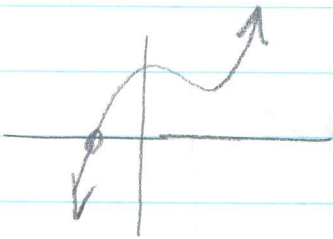
①



②



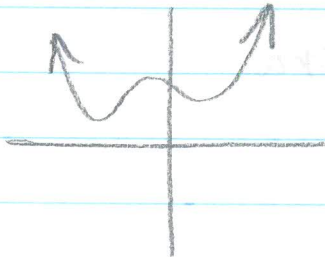
③



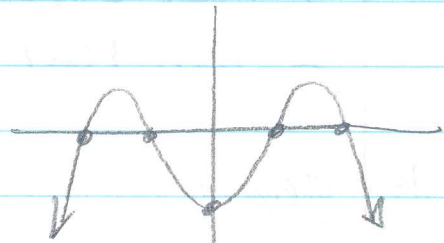
④

not possible -
the graph must
cross the x-axis
at least once

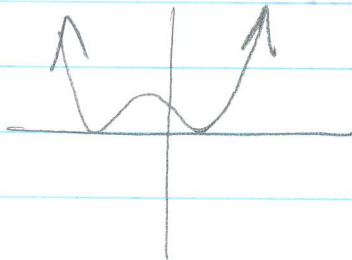
⑤



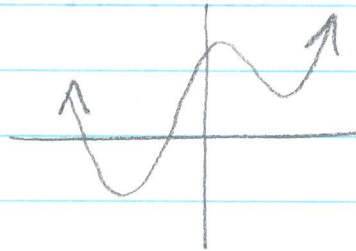
⑥



⑦



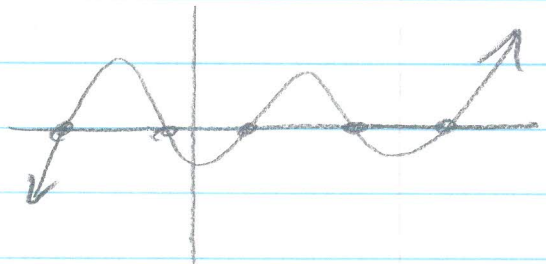
⑧



⑨

not possible - a
quartic function
has at most
4 distinct real
zeros

⑩



⑪ degree 6
4 real zeros
2 non-real complex zeros

⑫ degree 7
3 real zeros
4 non-real complex zeros

⑬ degree 6
4 real zeros
2 non-real complex zeros

⑭ degree 7
5 real zeros
2 non-real complex zeros