

Graphing Quadratic Equations WS 1

Graph each of the following quadratic functions. Identify the appropriate characteristics.

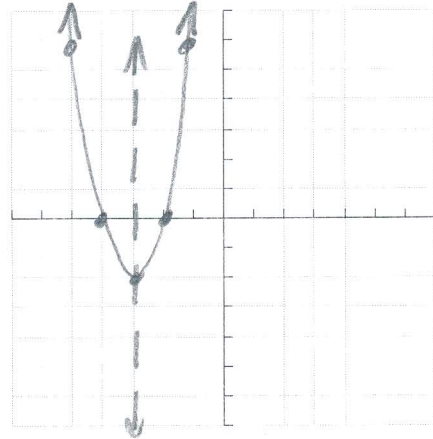
1. $f(x) = 2(x+2)(x+4)$

x-Intercept(s): $(-2, 0)$ $(-4, 0)$

Vertex: $(-3, -2)$

Axis of Symmetry: $x = -3$

y-intercept: $(0, 16)$



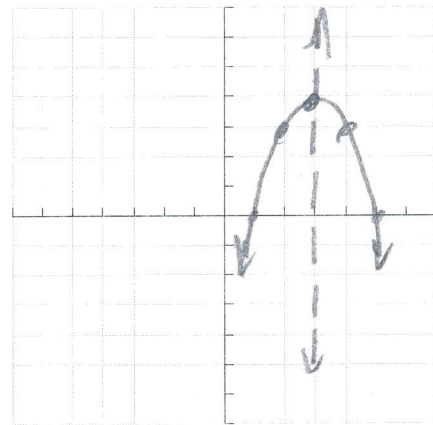
2. $g(x) = -(x-3)^2 + 4$

x-Intercept(s): $(1, 0)$ $(5, 0)$

Vertex: $(3, 4)$

Axis of Symmetry: $x = 3$

y-intercept: $(0, -5)$



3. $f(x) = 2x^2 - 12x + 18$

x-Intercept(s): $(3, 0)$ n/a

Vertex: $(3, 0)$

Axis of Symmetry: $x = 3$

y-intercept: $(0, 18)$

